

GENERAL NOTES: Permit No. B1908601 Date 09/03/19

1. FURNITURE SHOWN FOR REFERENCE. NIC TO BE SUBMITTED AS SUBMITTED OR NOTED DURING PLAN REVIEW AND ARE SUBJECT TO FIELD INSPECTION. APPROVED PLANS MUST BE KEPT ON SITE AND ARE NEEDED FOR INSPECTIONS. NO CHANGES OR MODIFICATIONS TO THESE PLANS. CHANGES REQUIRE A REVISION PERMIT WITH THE REVISED PLANS. TRADE PERMITS ARE REQUIRED FOR TRADE WORK. E.G. ELECTRICAL OR PLUMBING

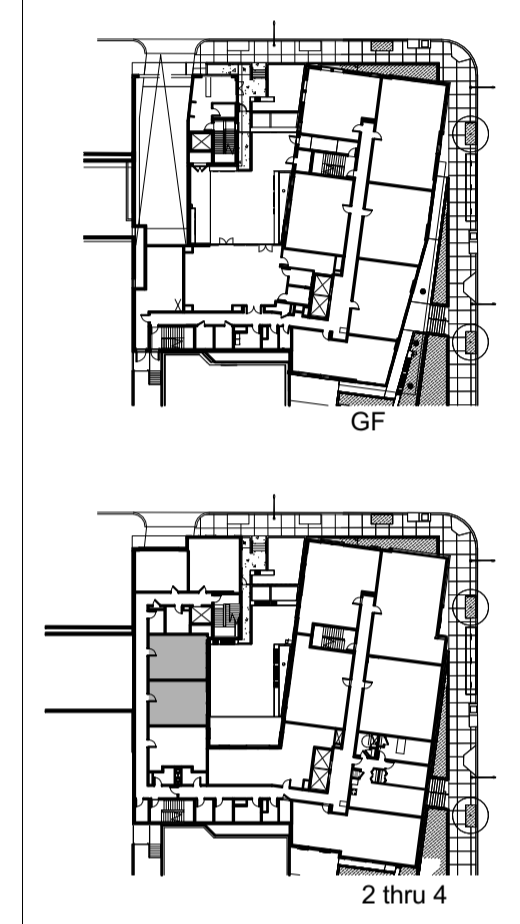
2. ROOM NUMBER SHOWN IN GENERIC FORMAT TO APPLY TO ALL FLOORS, I.E. 101, 201, 301, ETC.

3. IF NO DIMENSIONS ARE SHOWN TO LOCATE A FIXTURE IN RCP, IT SHALL BE CENTERED IN THE ROOM OR CEILING GRID.

4. SPRINKLERS TO HAVE RECESSED SIDE-MOUNTED HEADS, TYP.

ADA ACCESSIBLE UNIT

UNIT LOCATION PLAN:



LEAVE BLANK - FOR DCRA USE ONLY

CUNNINGHAM | QUILL ARCHITECTS PLLC

1054 31ST STREET NW
 SUITE 315
 WASHINGTON, DC 20007

PH. 202.337.0090
 FX. 202.337.0092
 www.cunninghamquill.com

OWNER:
 D.C. Department of General Services
 1250 U Street, NW, 4th Floor
 Washington, DC 20009
 Phone: (202) 727-2800

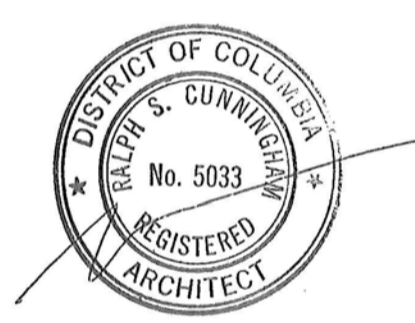


MEP ENGINEER:
 Setty & Associates Int'l
 1415 Eliot Place, NW, Ste 100
 Washington, DC 20007
 Phone: 202-393-1523

STRUCTURAL ENGINEER:
 Yun Associates, LLC
 1415 Eliot Place, NW, Ste 100
 Washington, DC 20006
 Phone: 202-849-3075

CIVIL ENGINEER:
 Witas Mensch Corporation
 510 8th Street, SE
 Washington, DC 20003
 Phone: 202-638-4040 x255

LANDSCAPE ARCHITECT:
 Landscape Architecture Bureau
 714 7th Street, SE
 Washington, DC 20003
 Phone: 202 543 6550



APR 23 2019
 Copyright © 2019

Issues / Revisions

1/20/2018	Schematic Design Submission
01/17/2019	Foundation to Grade Permit
02/08/2019	Design Development Drawing Set
04/23/2019	Permit Set

Ward 1 STFH & PSH
 2500 14th Street NW
 Washington DC 20009

CQA#21811
 Drawing Title

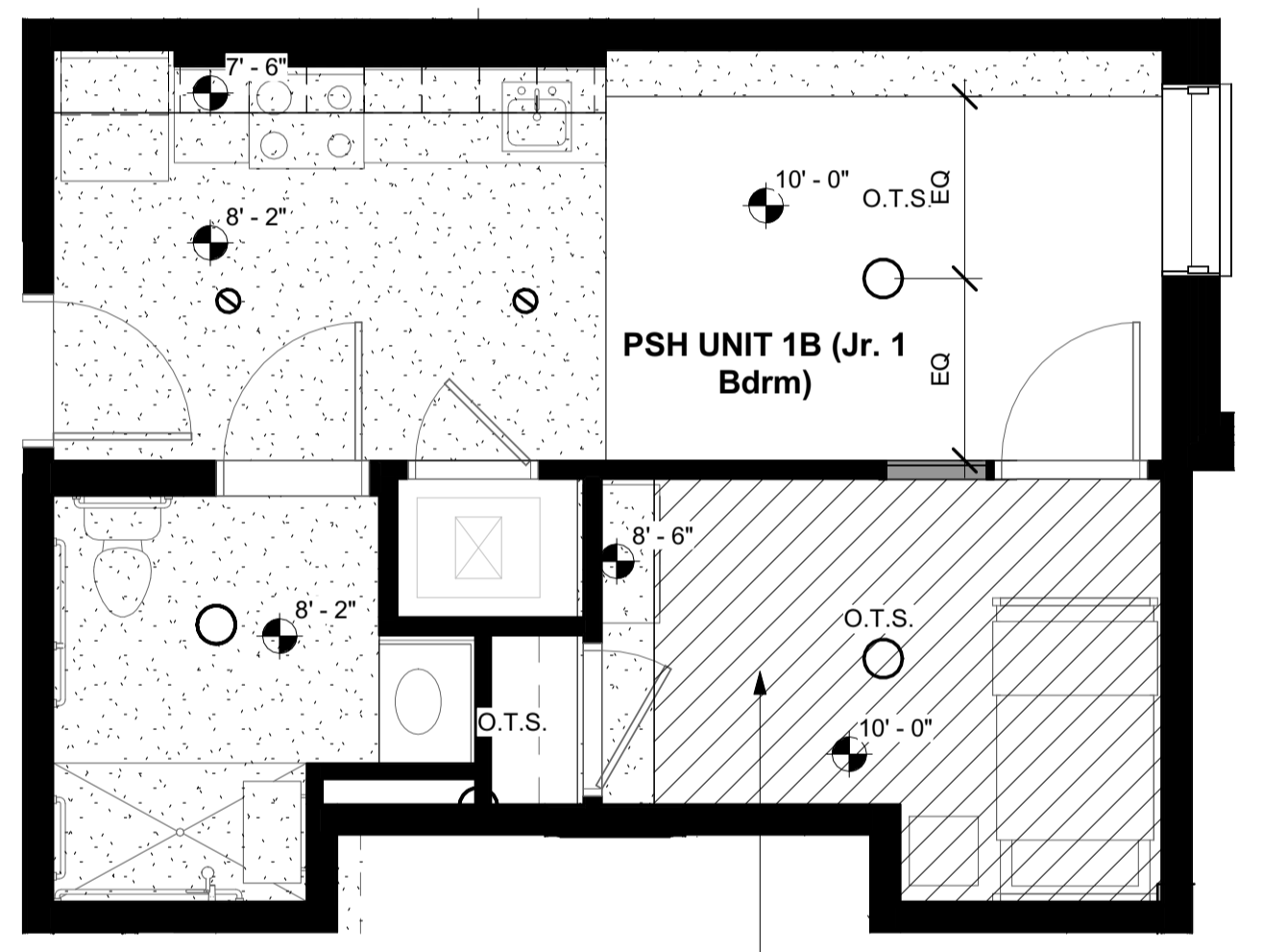
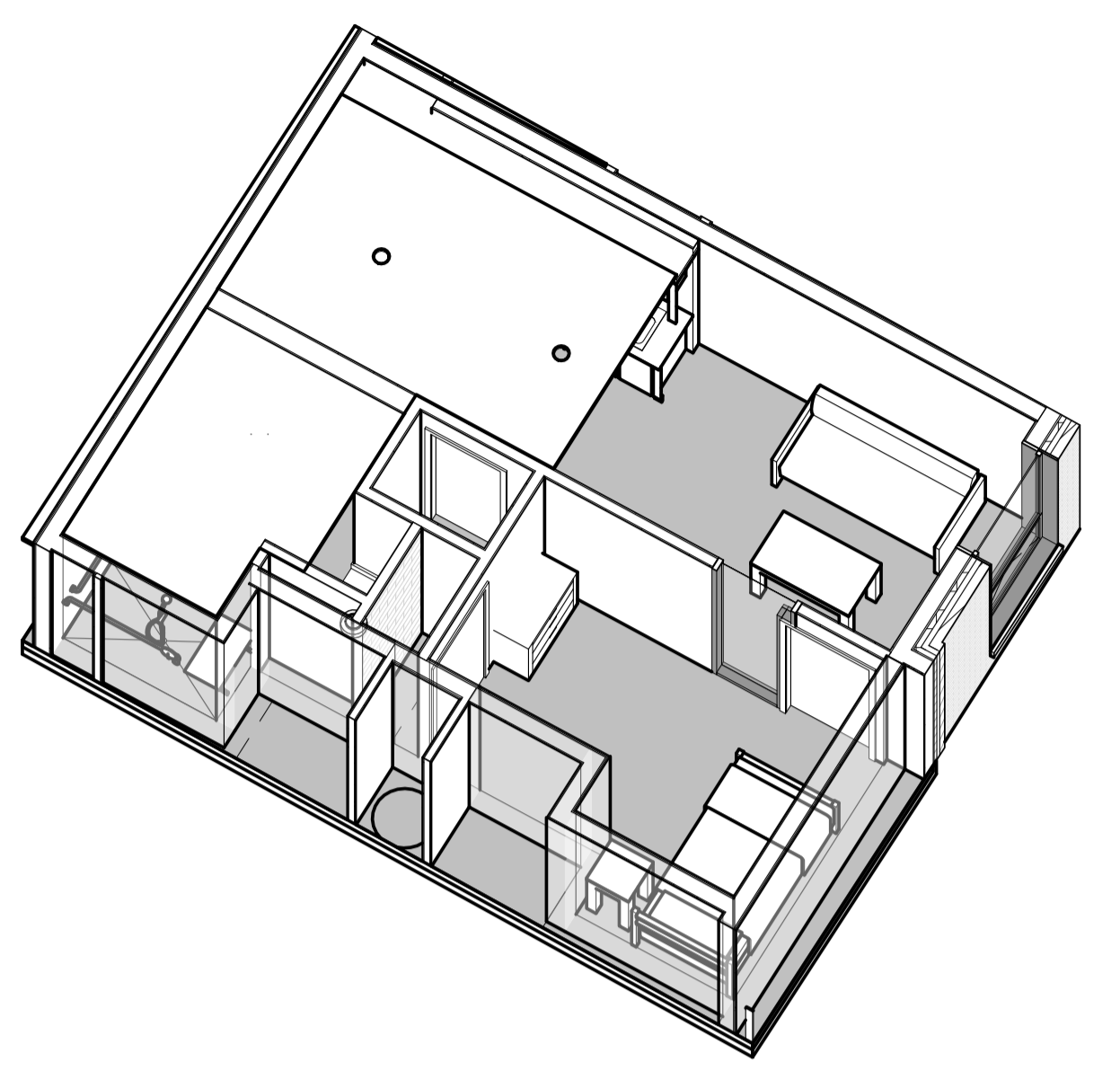
PSH Unit 1

Scale: As indicated
 Date: 04/23/19
 Drawn By: CQA
 Checked By: CQA

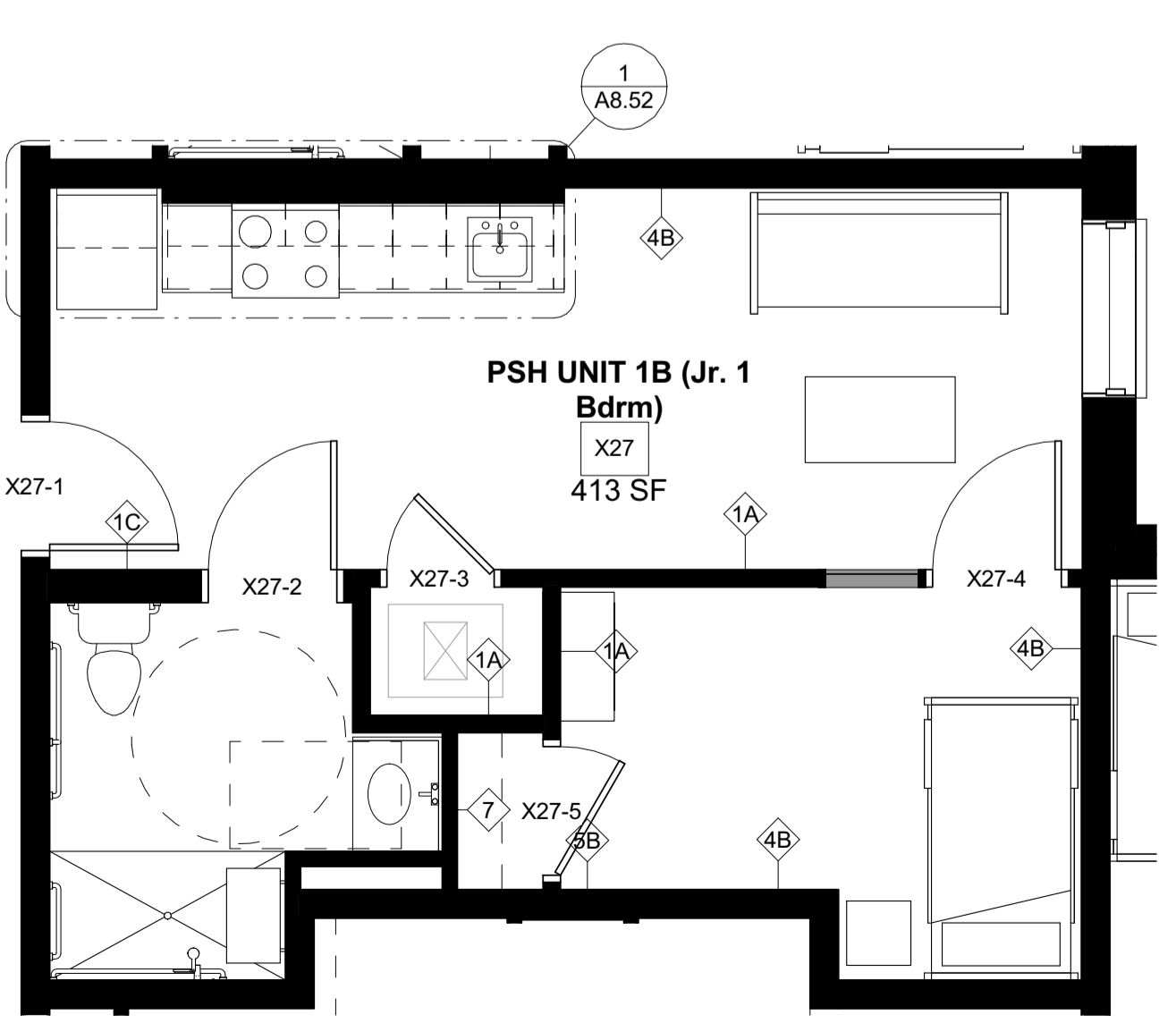
Scale: As indicated
 Date: 04/23/19
 Drawn By: CQA
 Checked By: CQA

ISSUED FOR PERMIT - DEPARTMENT OF GENERAL SERVICES PROJECT

PSH UNIT 1B

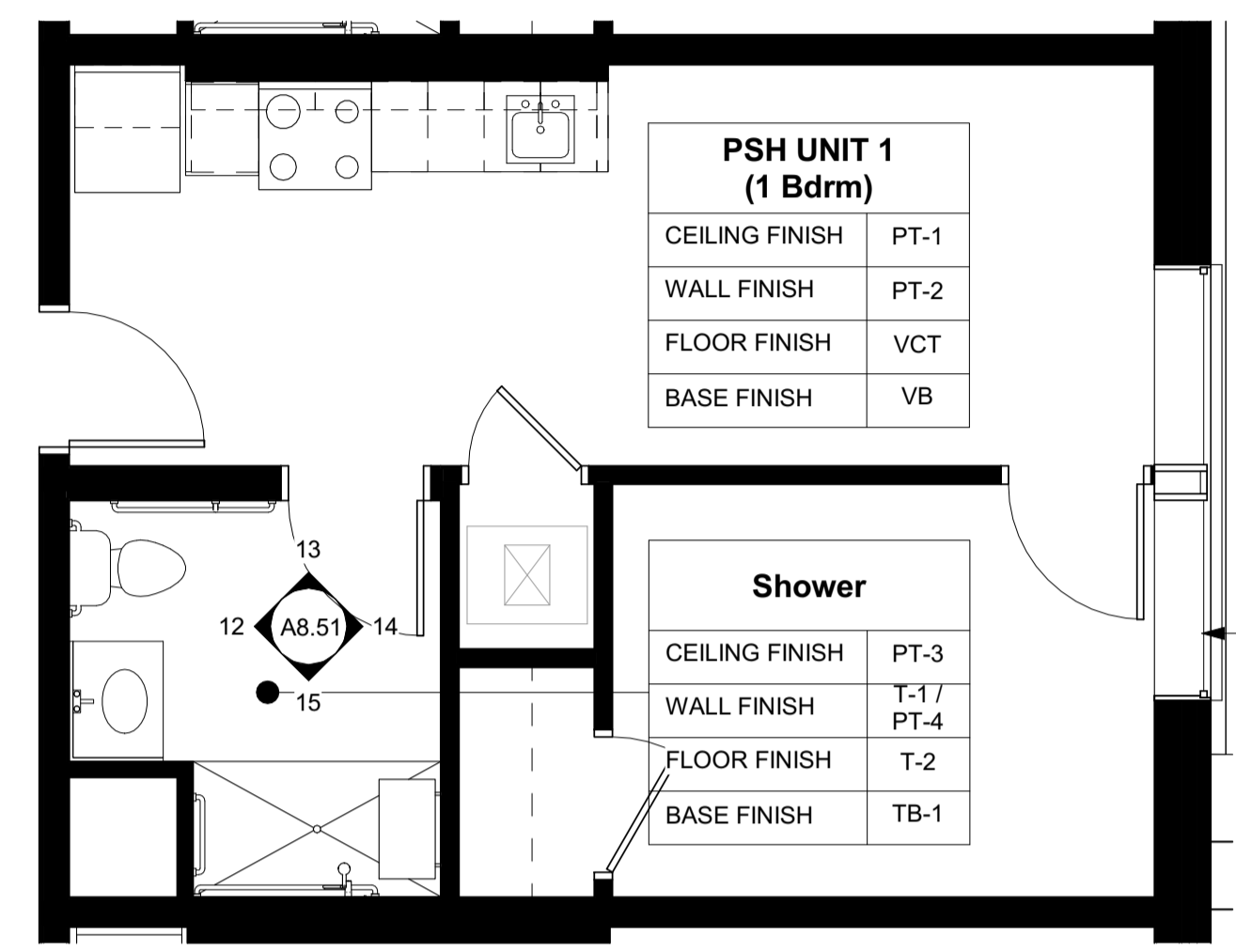


6 PSH Unit 1B - RCP
 1/4" = 1'-0"

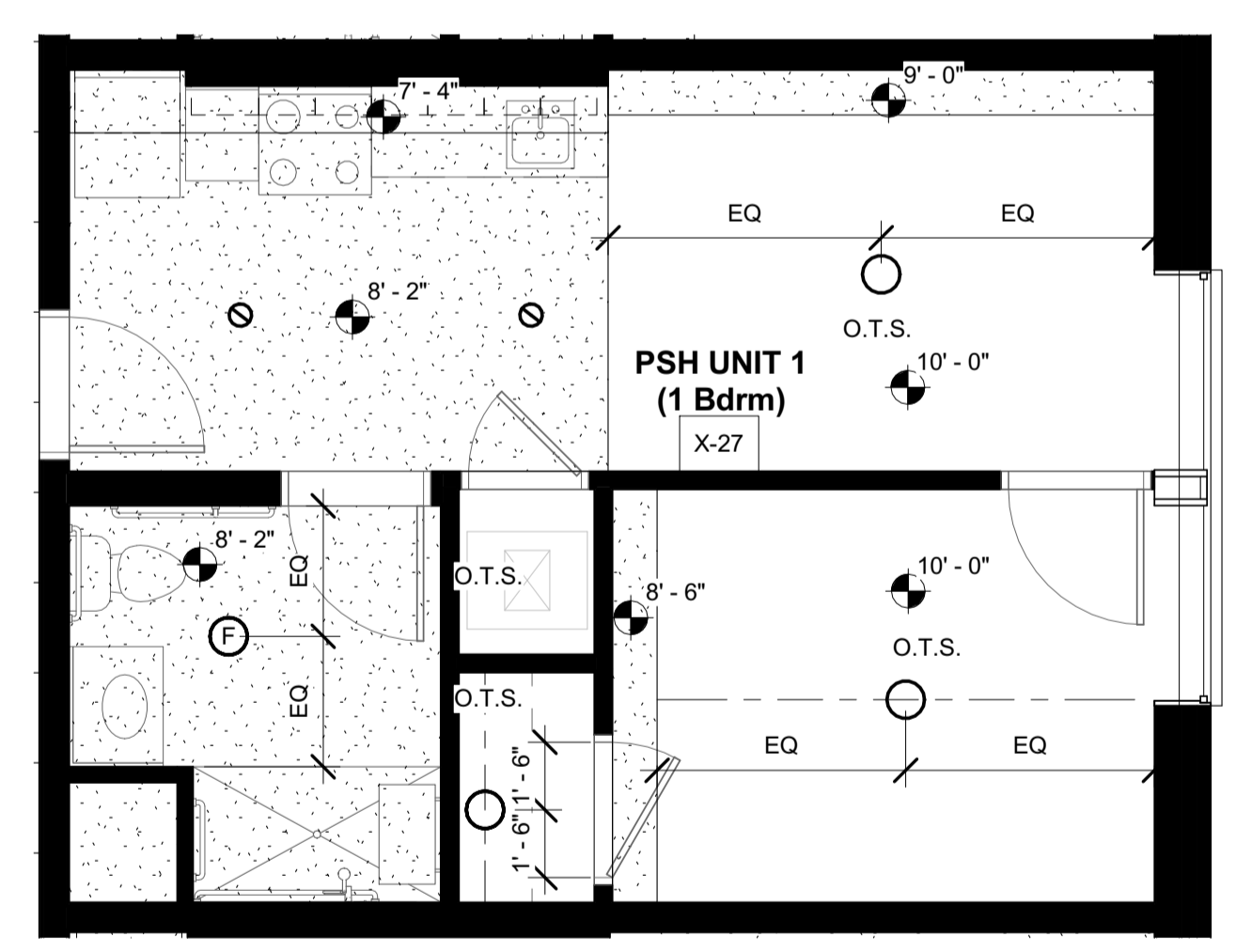


5 PSH Unit 1B
 1/4" = 1'-0"

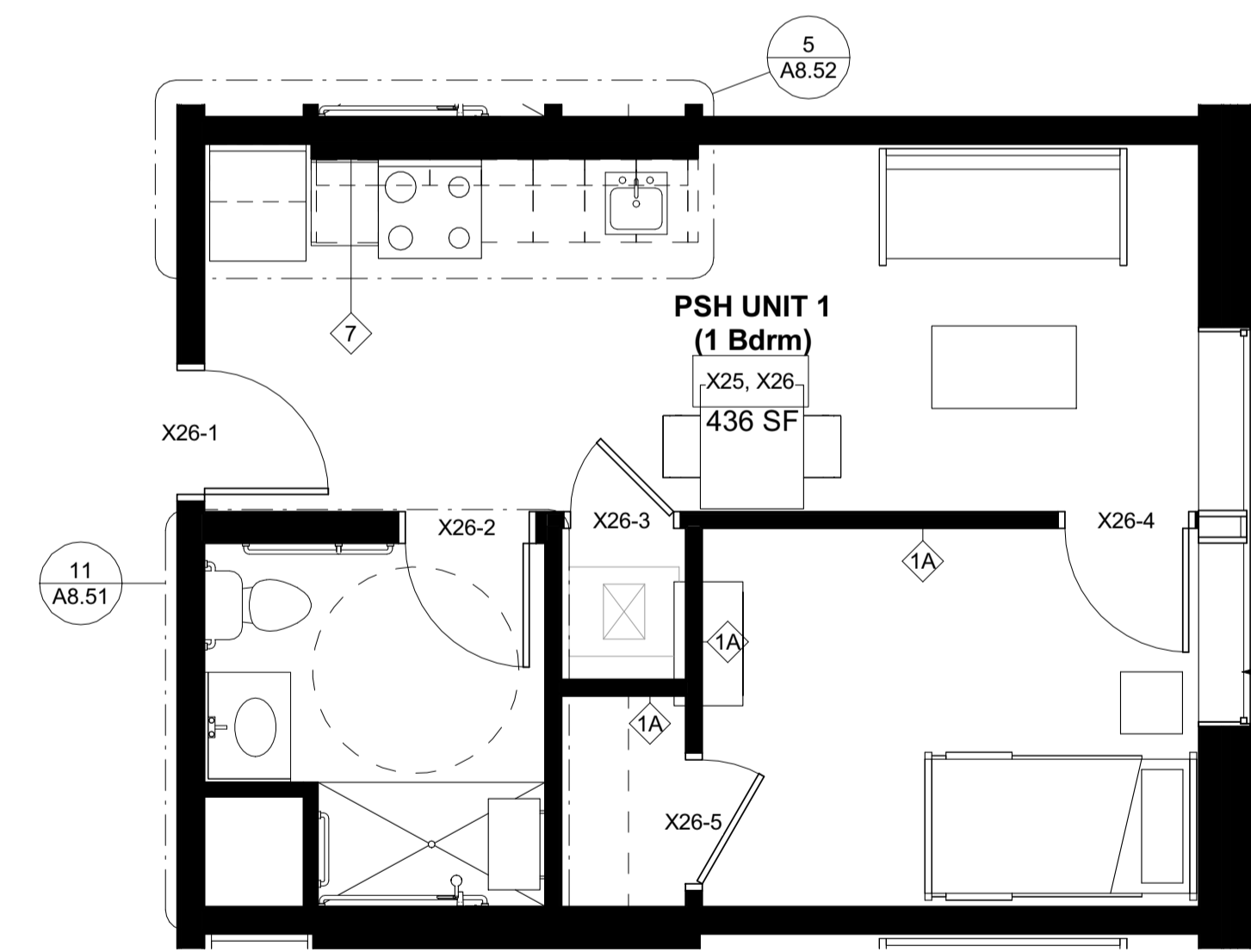
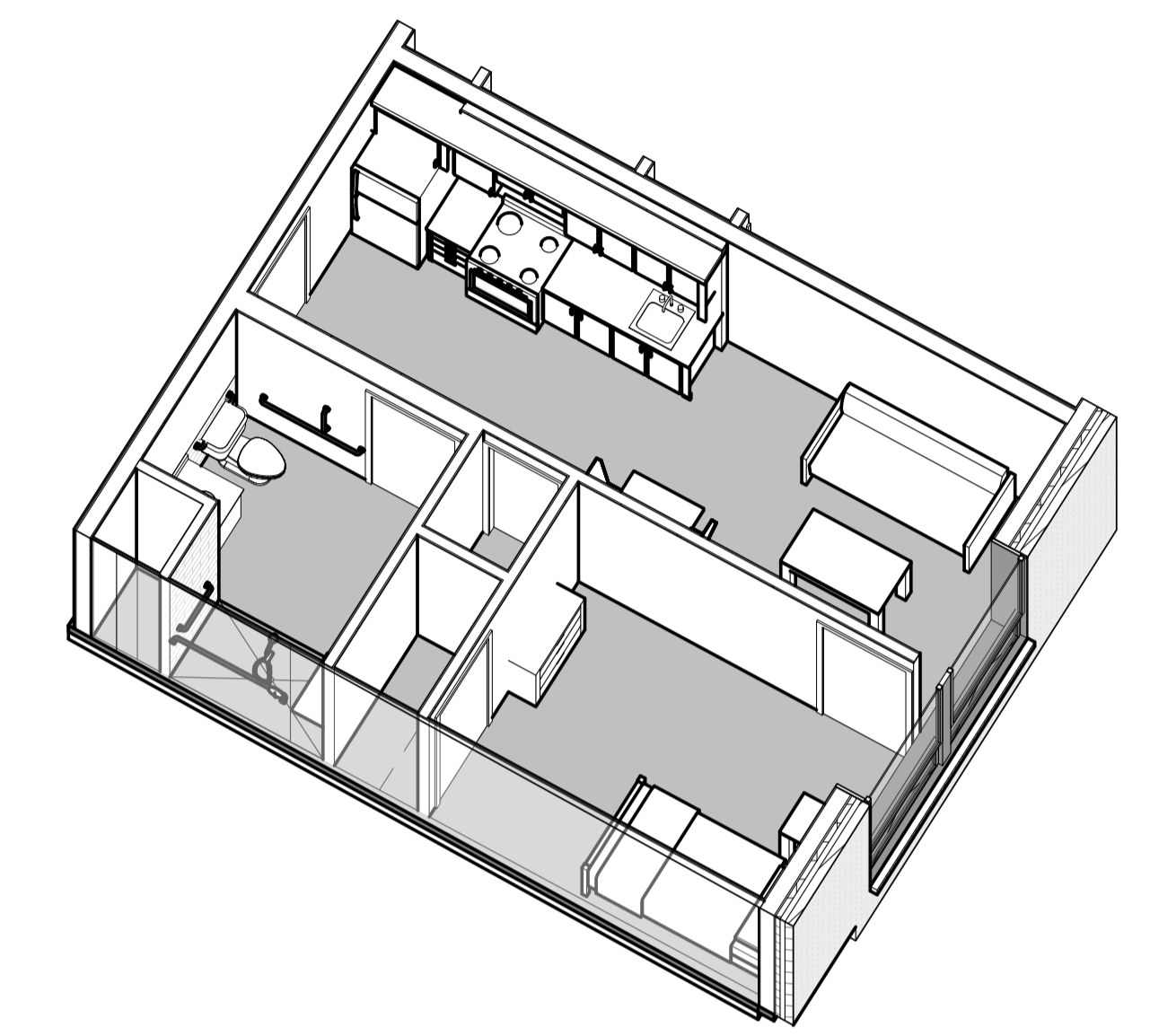
PSH UNIT 1A



3 PSH Unit 1 - Finish Plan
 1/4" = 1'-0"



2 PSH Unit 1 - RCP
 1/4" = 1'-0"



1 PSH Unit 1
 1/4" = 1'-0"

